

# Installation Guide for SEMC Calibration driver

---

## Contents

Introduction .....	2
Preparations.....	2
Installation Guide for Windows XP .....	3
Installation Guide for Window 7 .....	16

# Introduction

This document contains two guides one for windows XP and one for Windows 7.

The preparations on this page are unique. So when these are done continue with the guide that fits your operating system.

## Preparations

Flash a Phone with ETS software from Emma.

Remove and reinsert the battery.

Press power button until the phone vibrates.

Wait 10 seconds.

Choose the USB port you want to use for calibration and connect the phone to it. The driver will only be installed for the port with the phone in it.

# Installation Guide for Windows XP

This guide explains how to install the SEMC calibration driver on a Windows XP system.

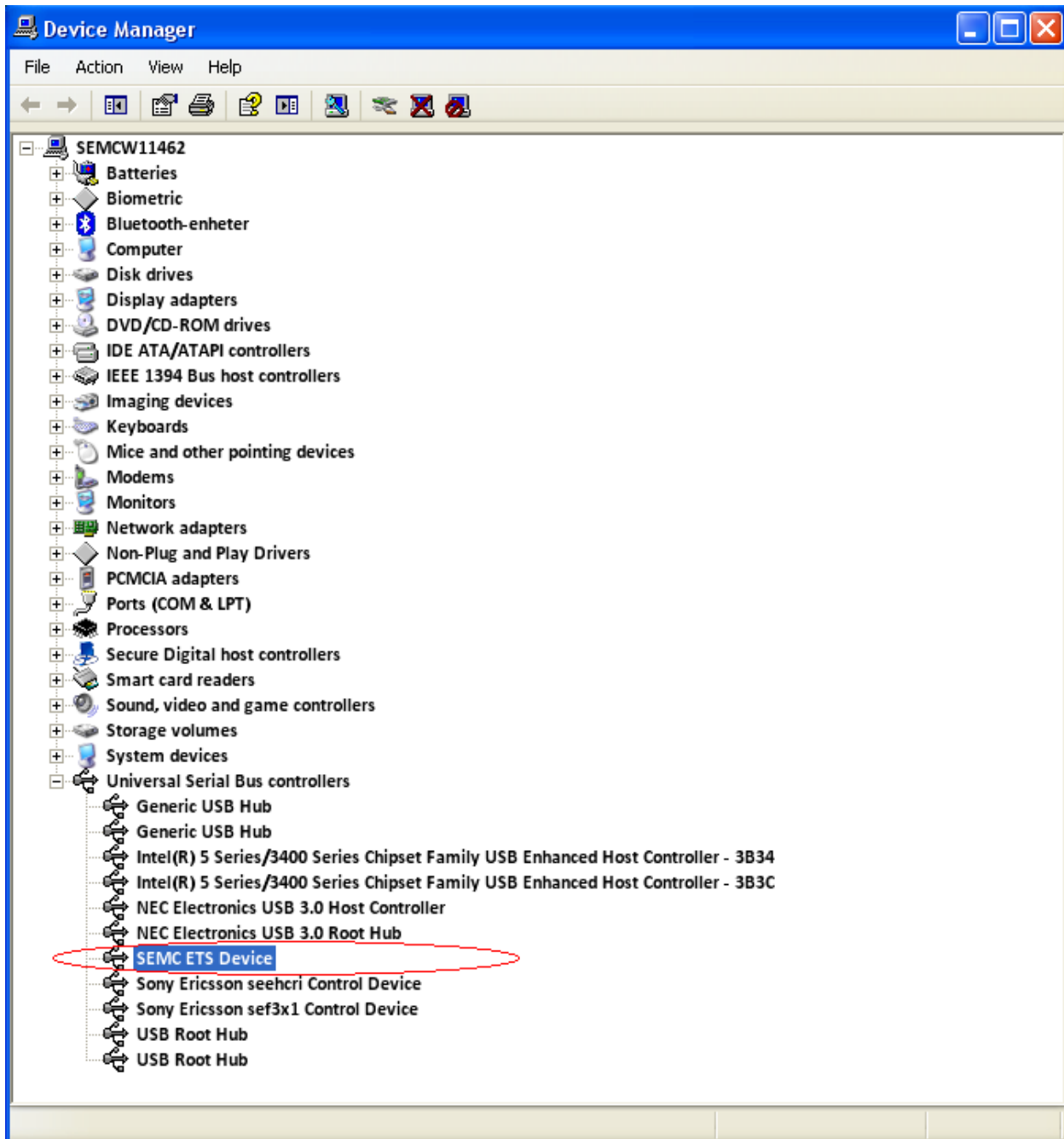
After the preparation step do the following.

If add new hardware pops up, when the phone is connected, follow the guide from Page 7.

If no add new hardware pops up, when the phone is connected, start device manager following the path below. And follow guide from next page.

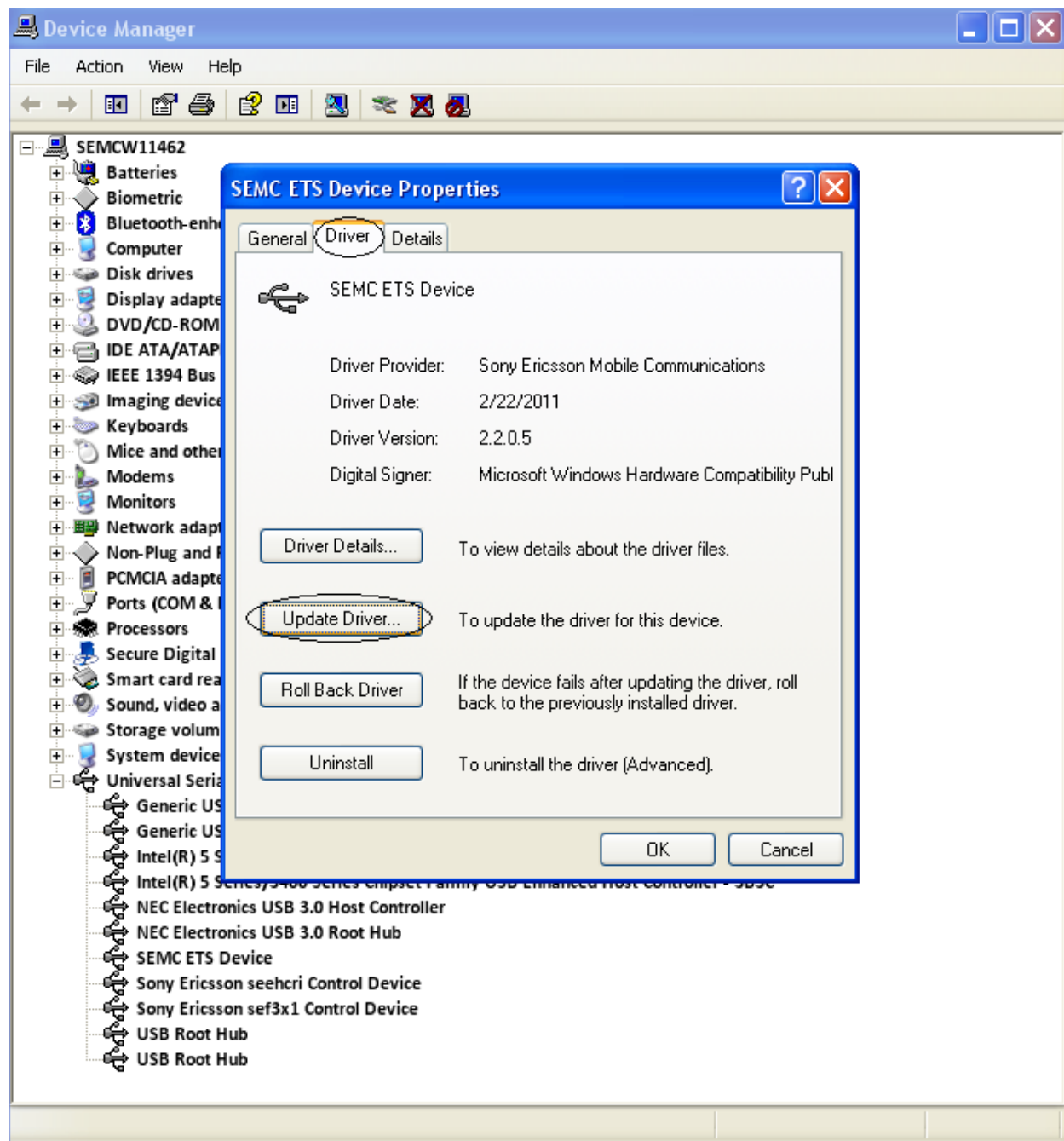
Open Device Manager from Start->Setting->Control Panel->System->Hardware->Device Manager.

Open SEMC ETS Device.

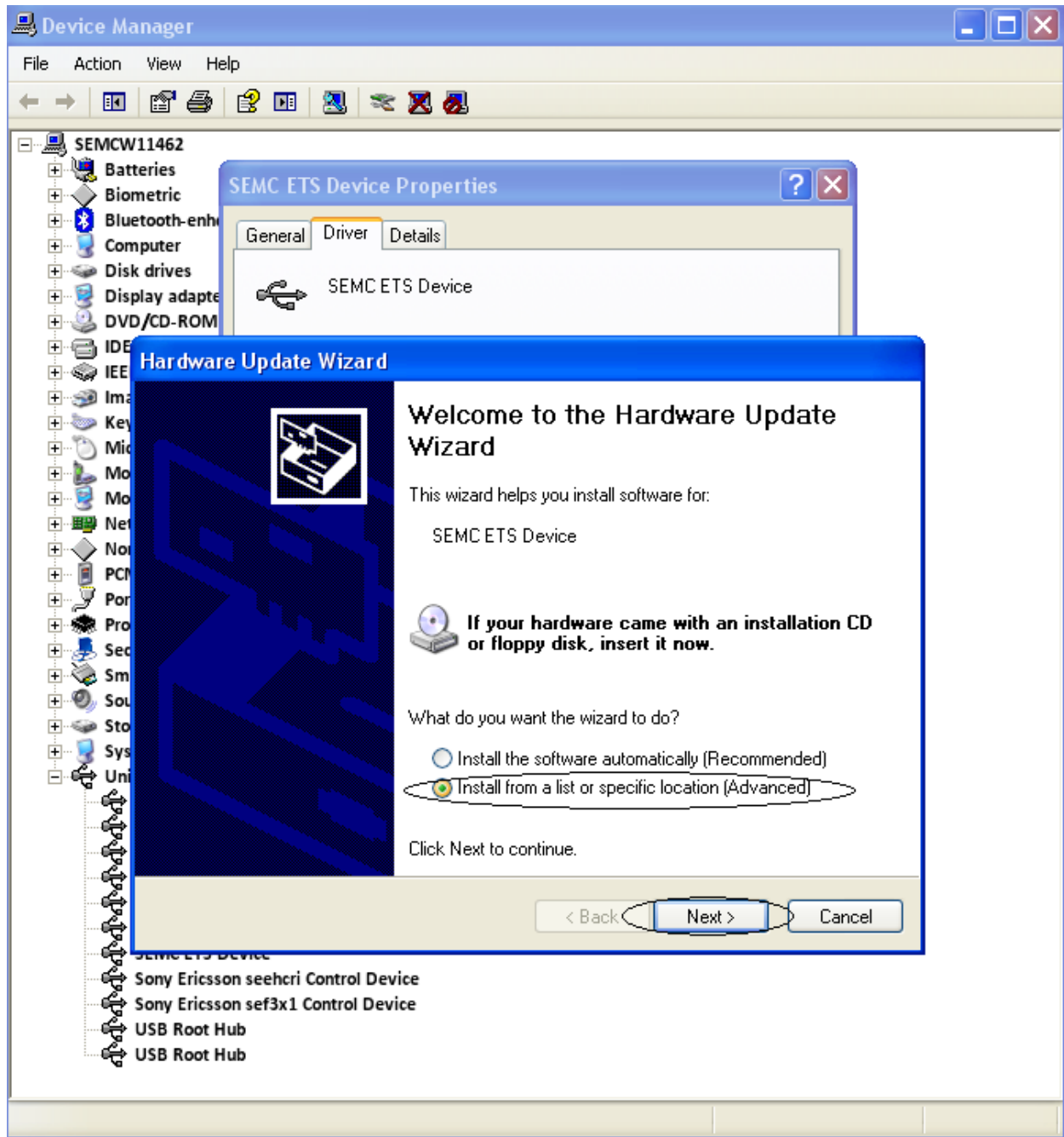


Click the Driver tab.

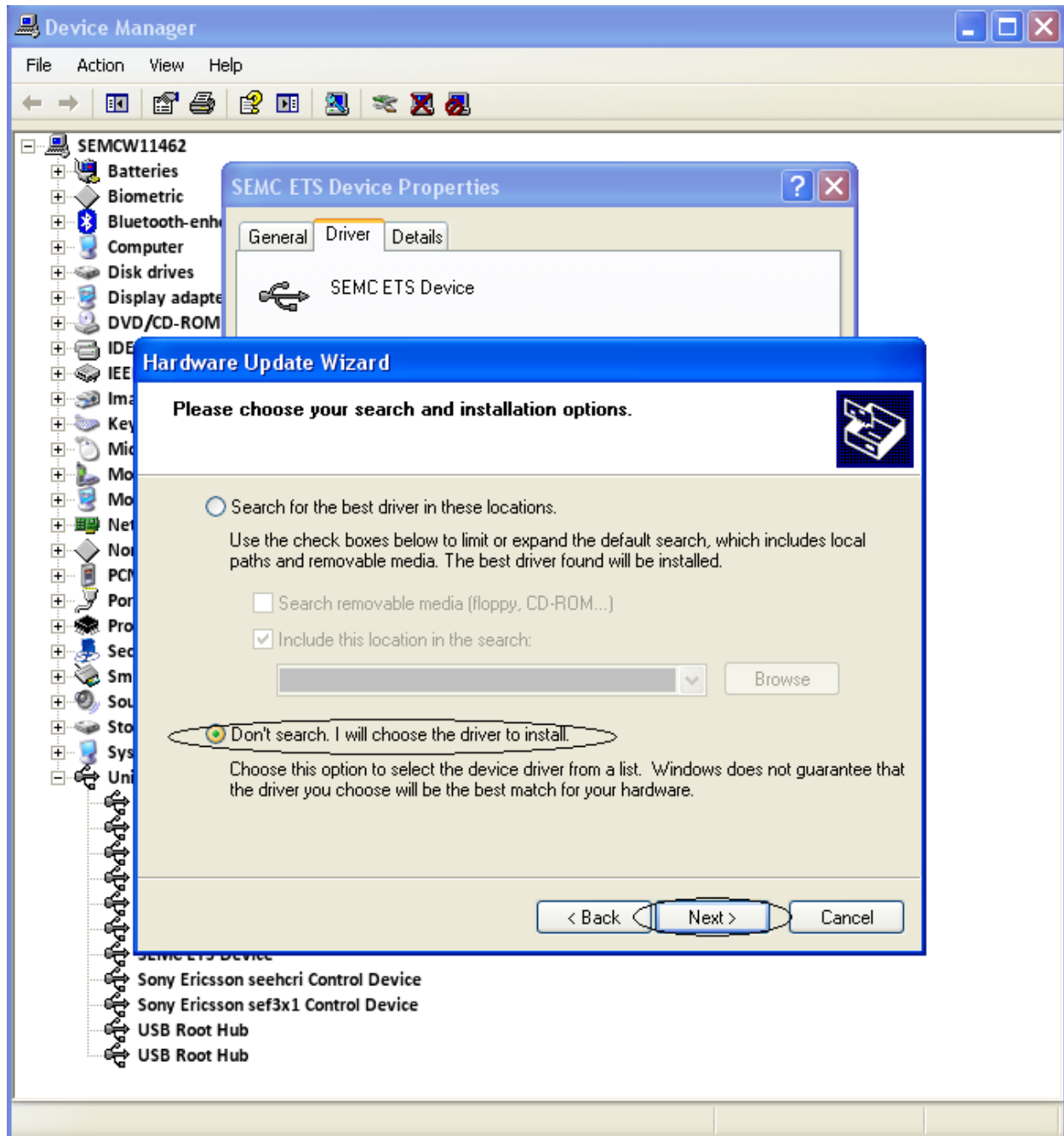
Click Update Driver.



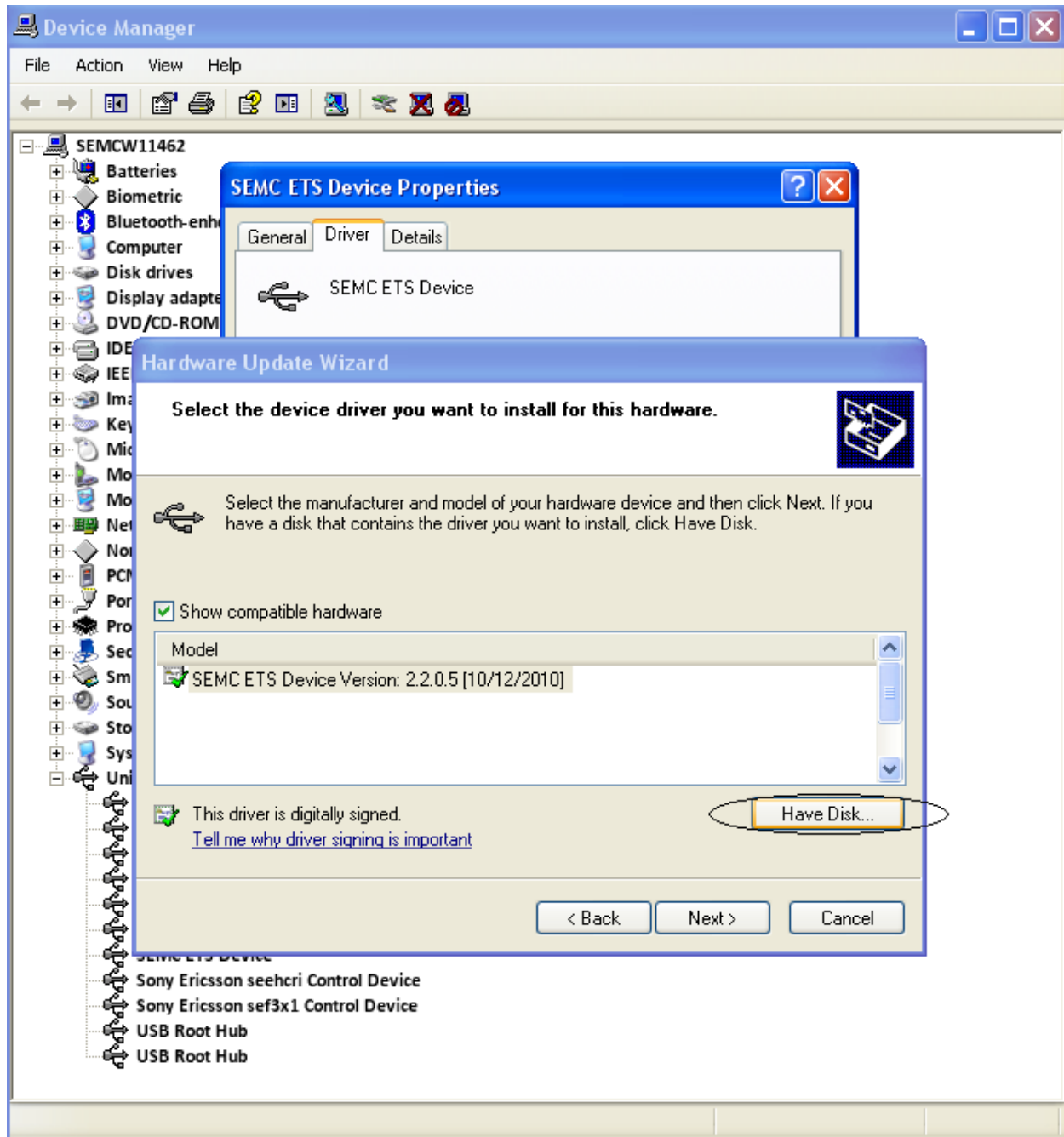
Check Install from a list or specific location (Advanced).  
Click Next.



Check don't search. I will choose the driver to install.  
Click Next.

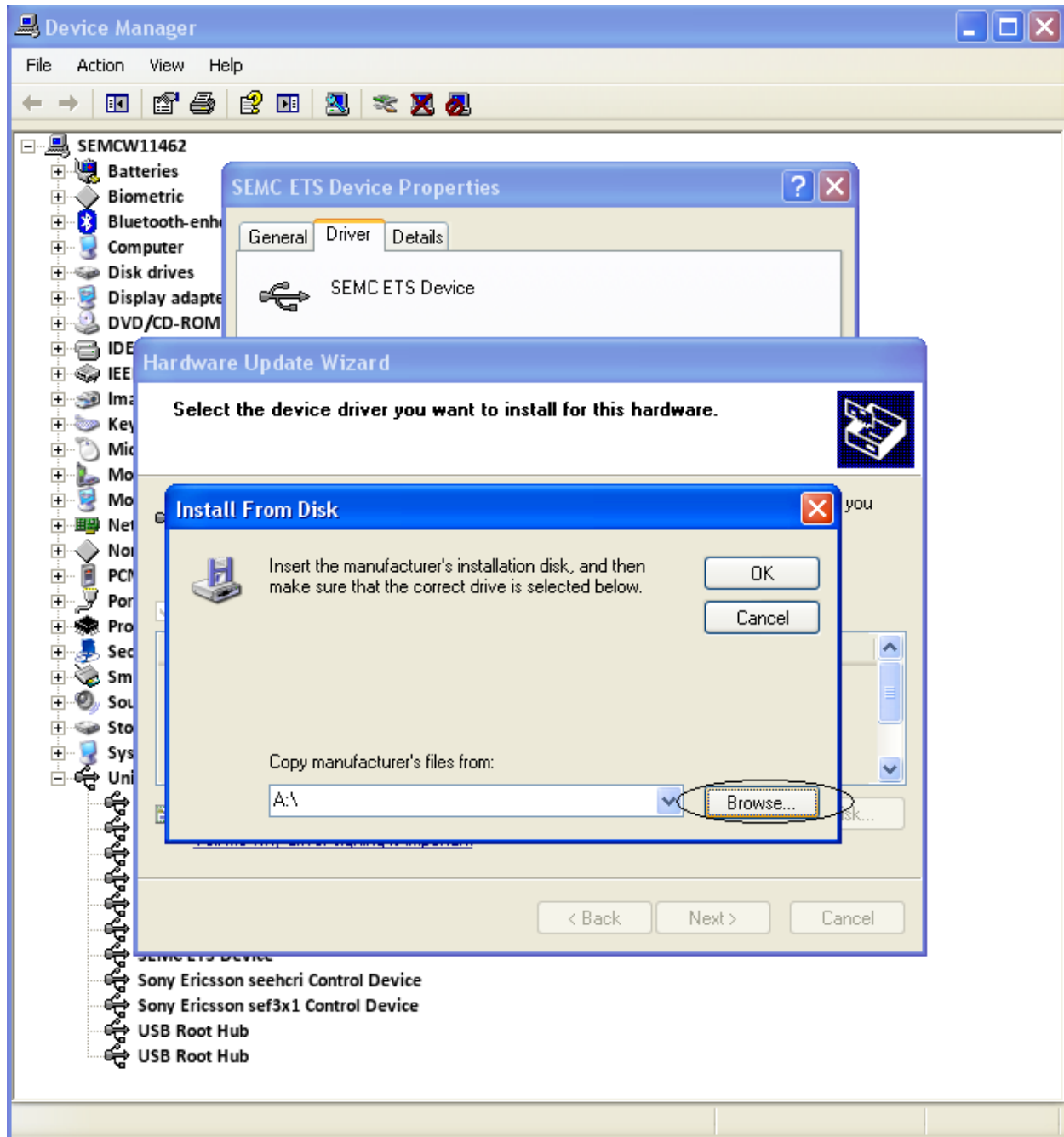


Click Have Disk.

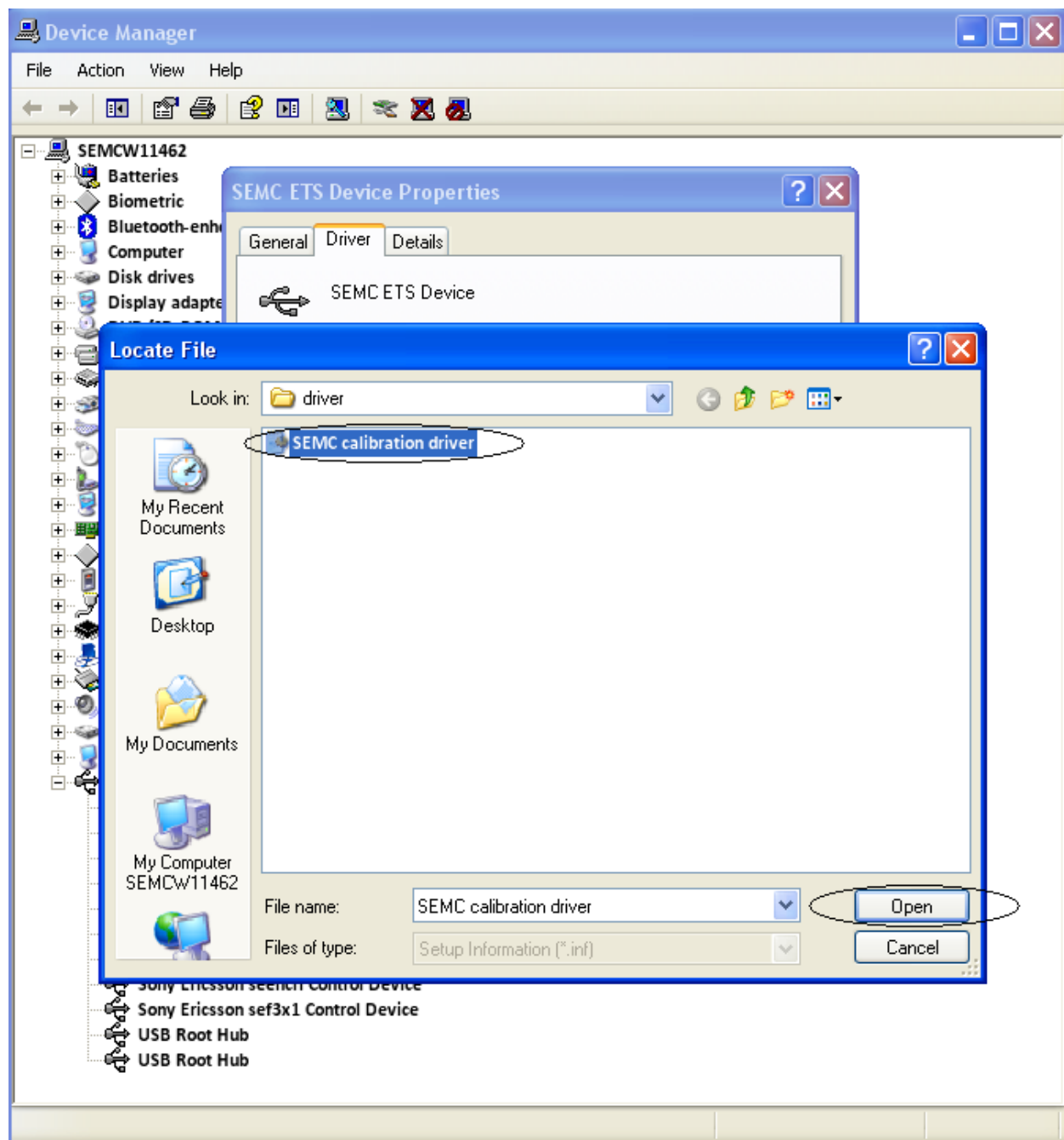




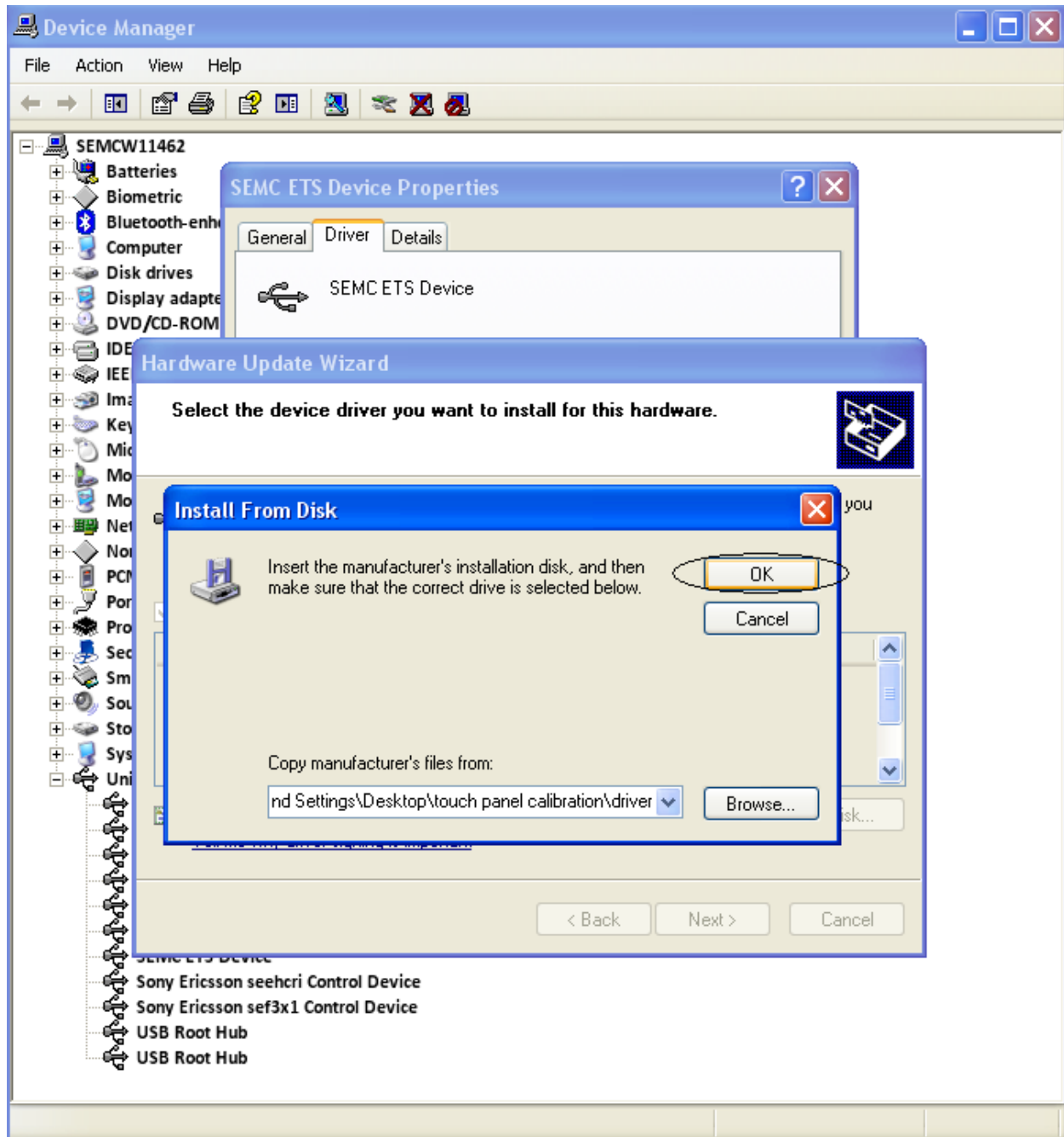
Click Browse.



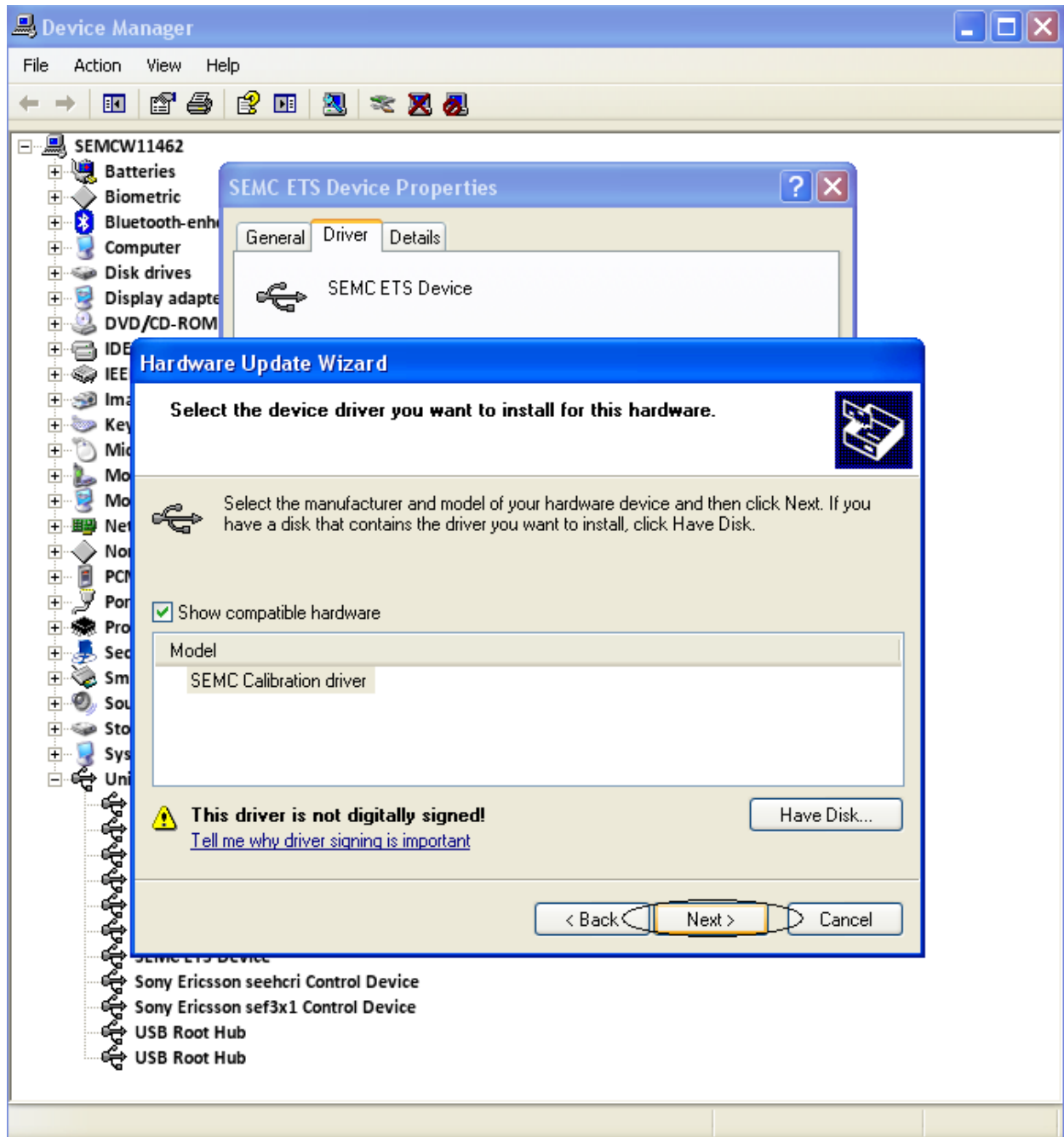
Browse to the folder where you have downloaded the driver.  
Select the SEMC calibration driver.  
Click Open.



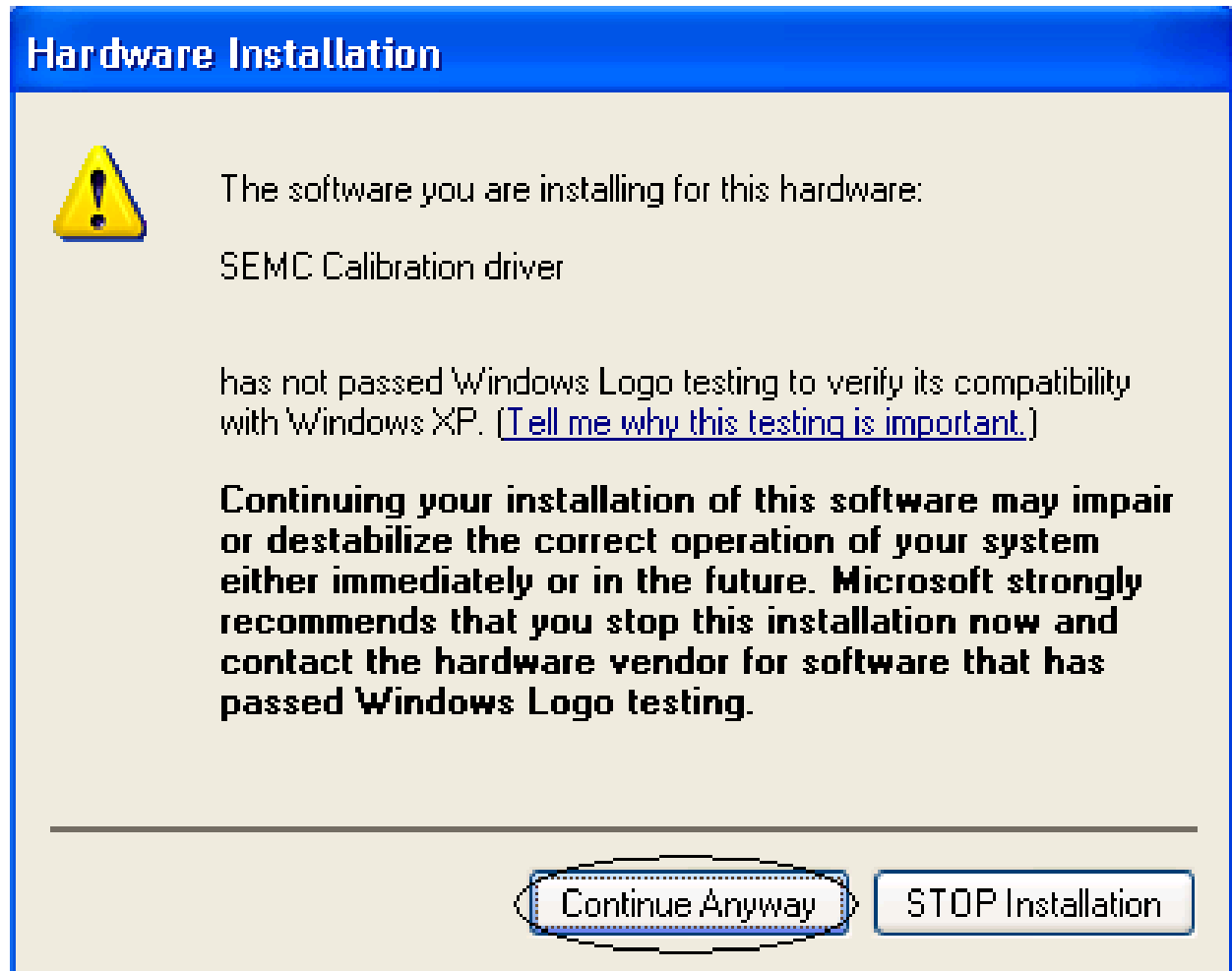
Click OK.



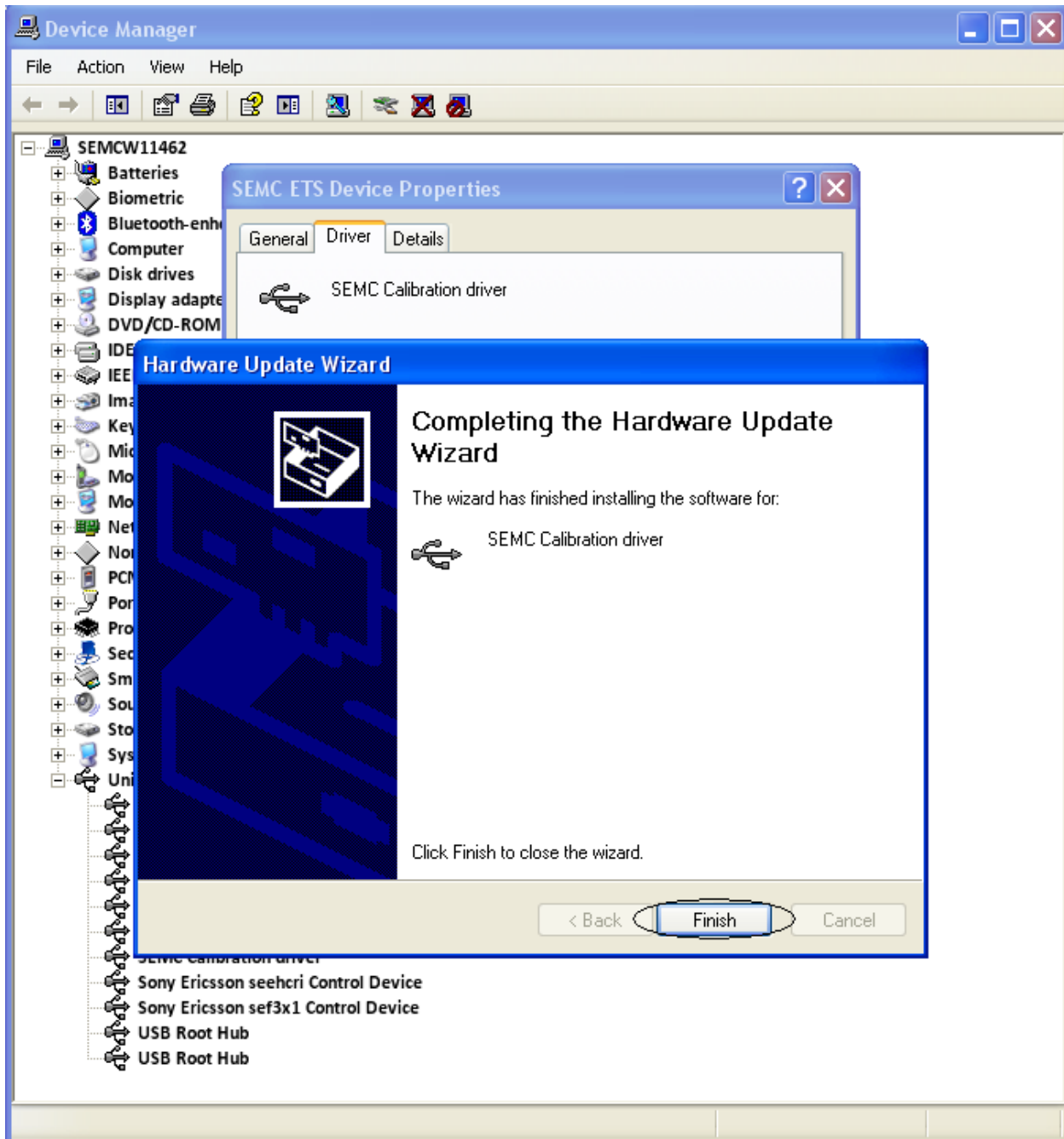
Click Next.



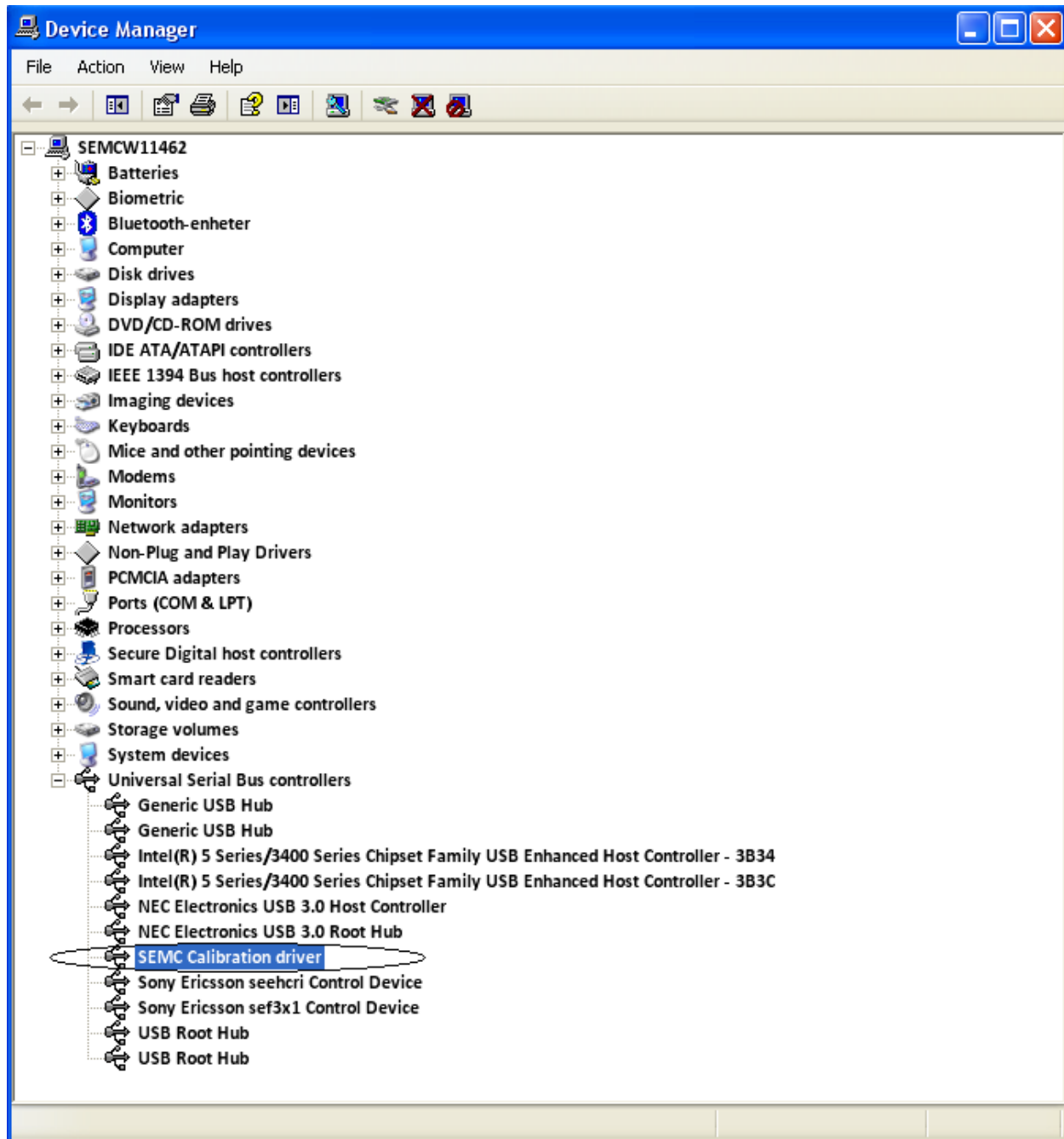
Depending of the security settings this widow can pop up.  
Click Continue Anyway.



Click Finish.



Now it should say SEMC Calibration driver.



# Installation Guide for Window 7

This guide explains how to install the SEMC calibration driver on a Windows 7 system.

First thing to do after the preparation step is to start the Device manager.

Click Start->Control Panel

If it's a category view

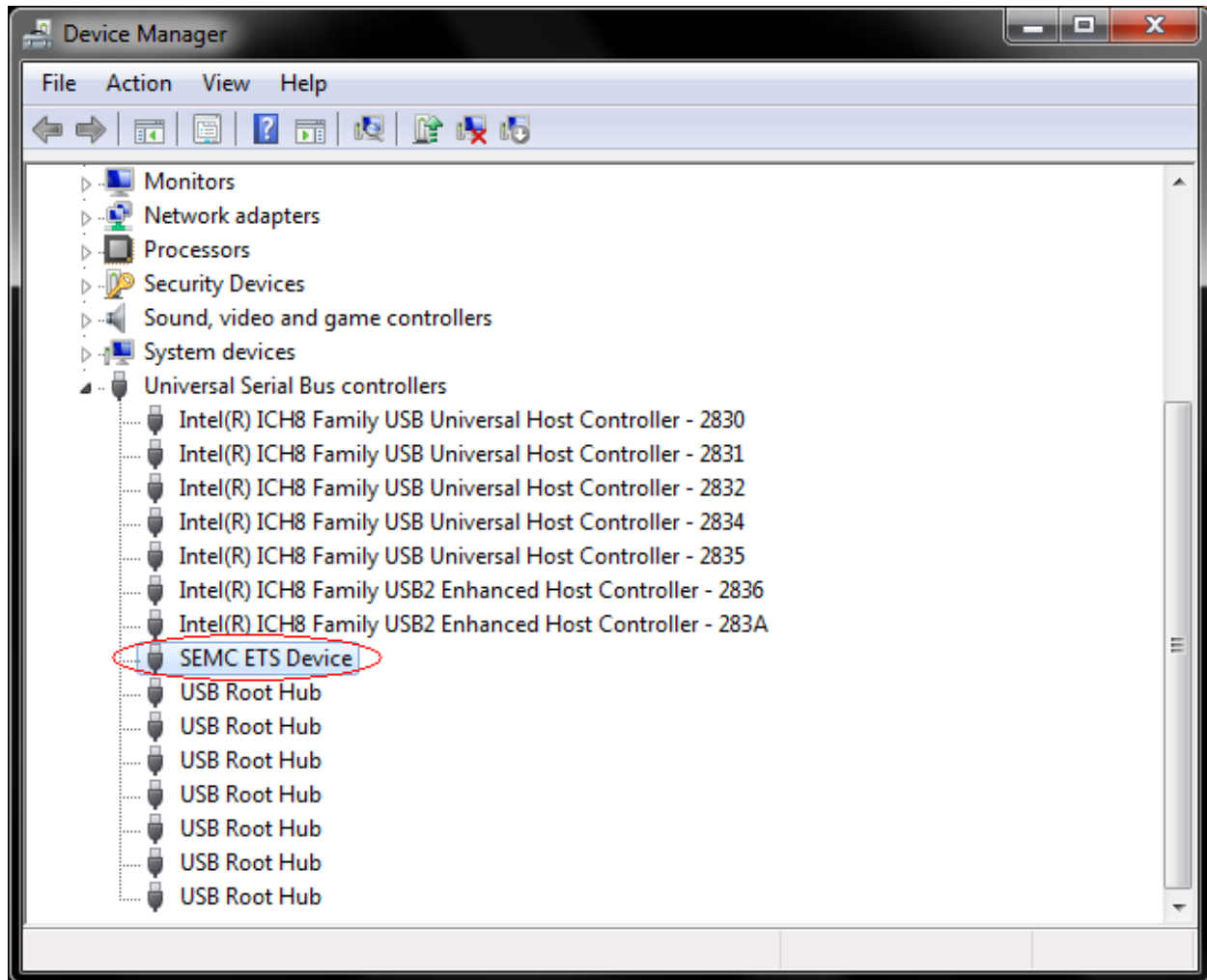
Click Hardware and Sound->Device Manager

If it's a icon view

Click Device Manger

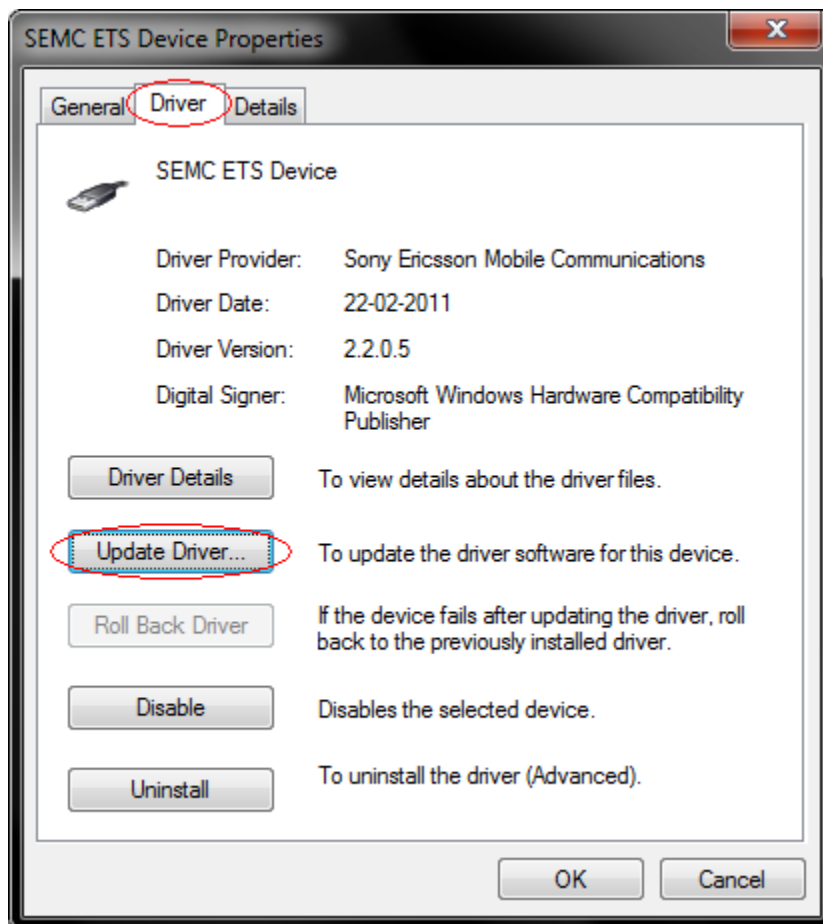


Open SEMC ETS Device.

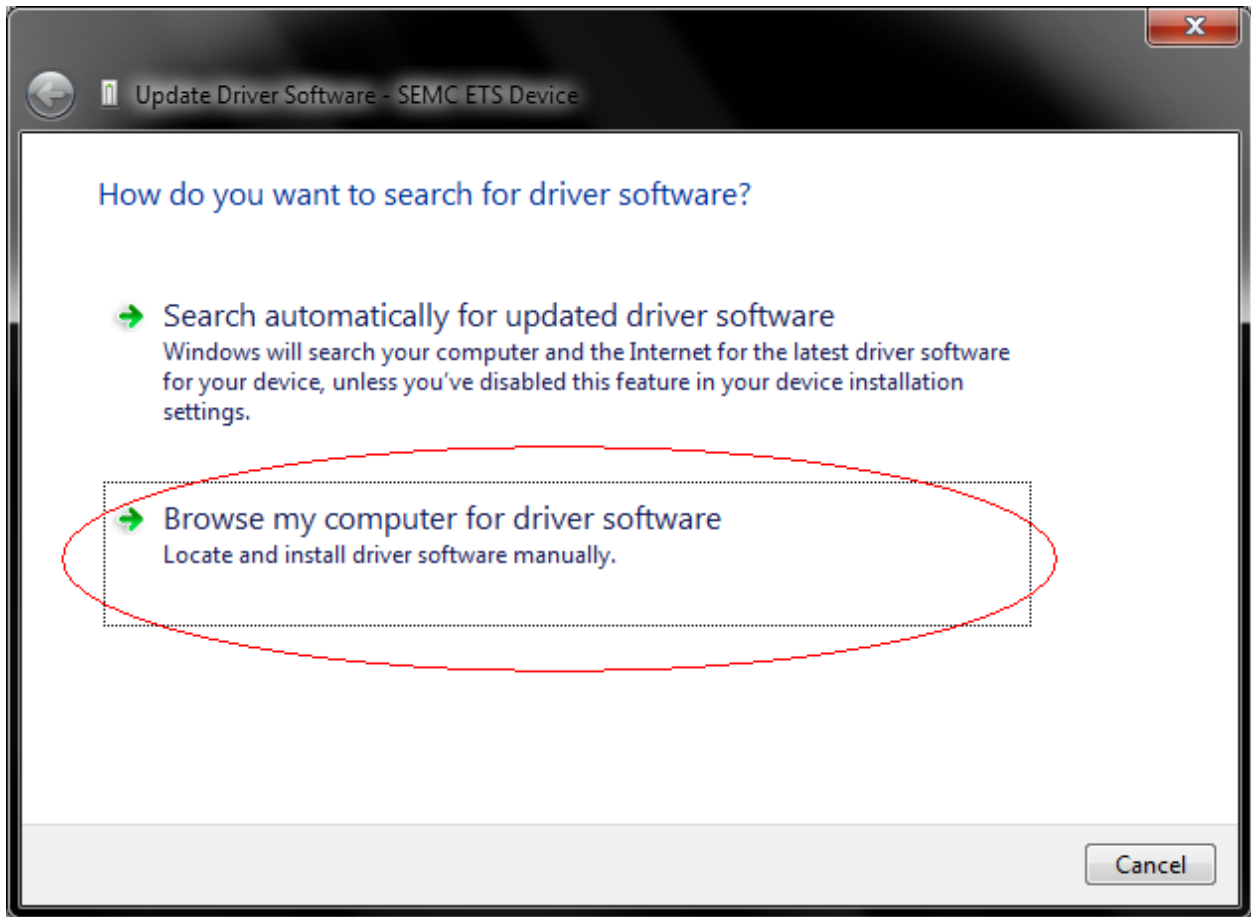


Click the Driver tab.

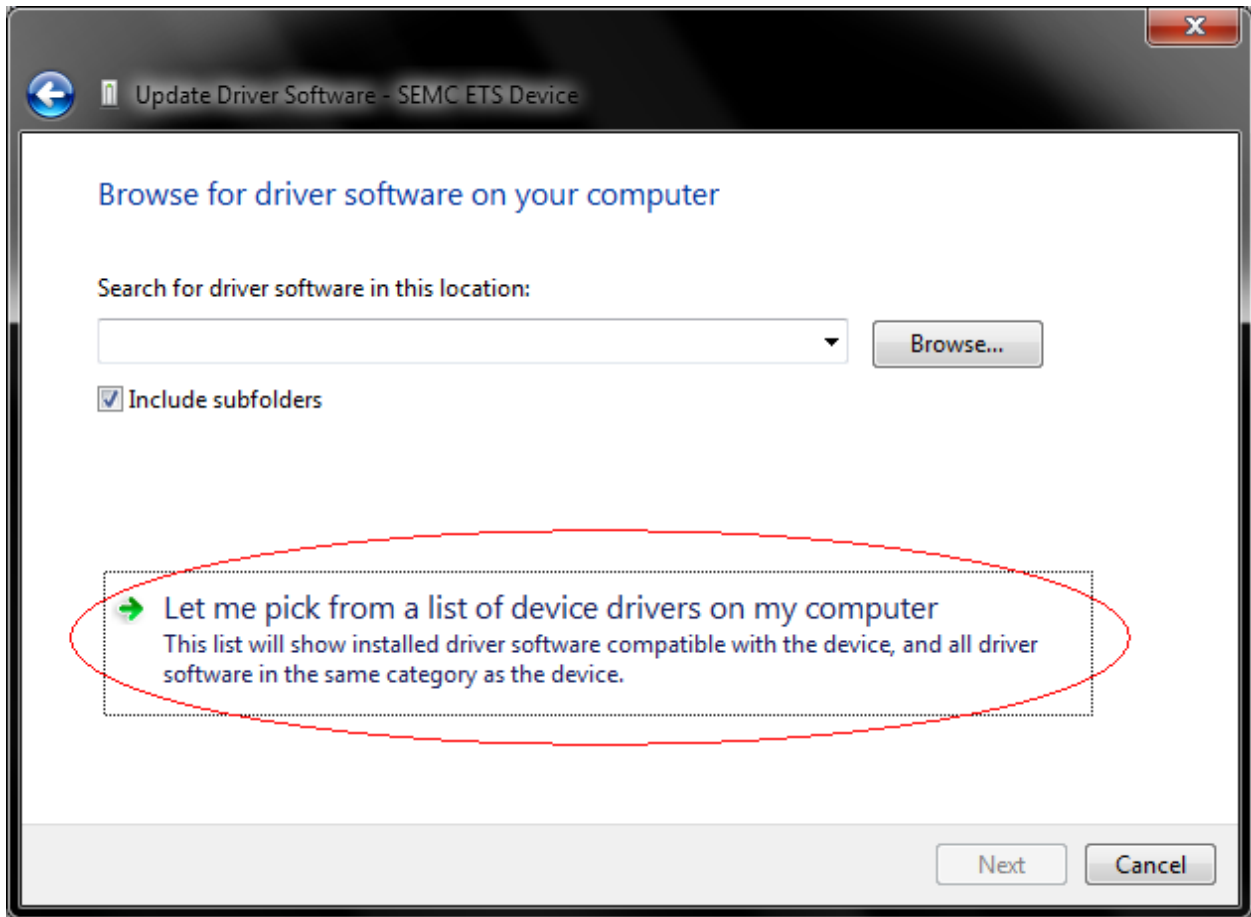
Click Update Driver.



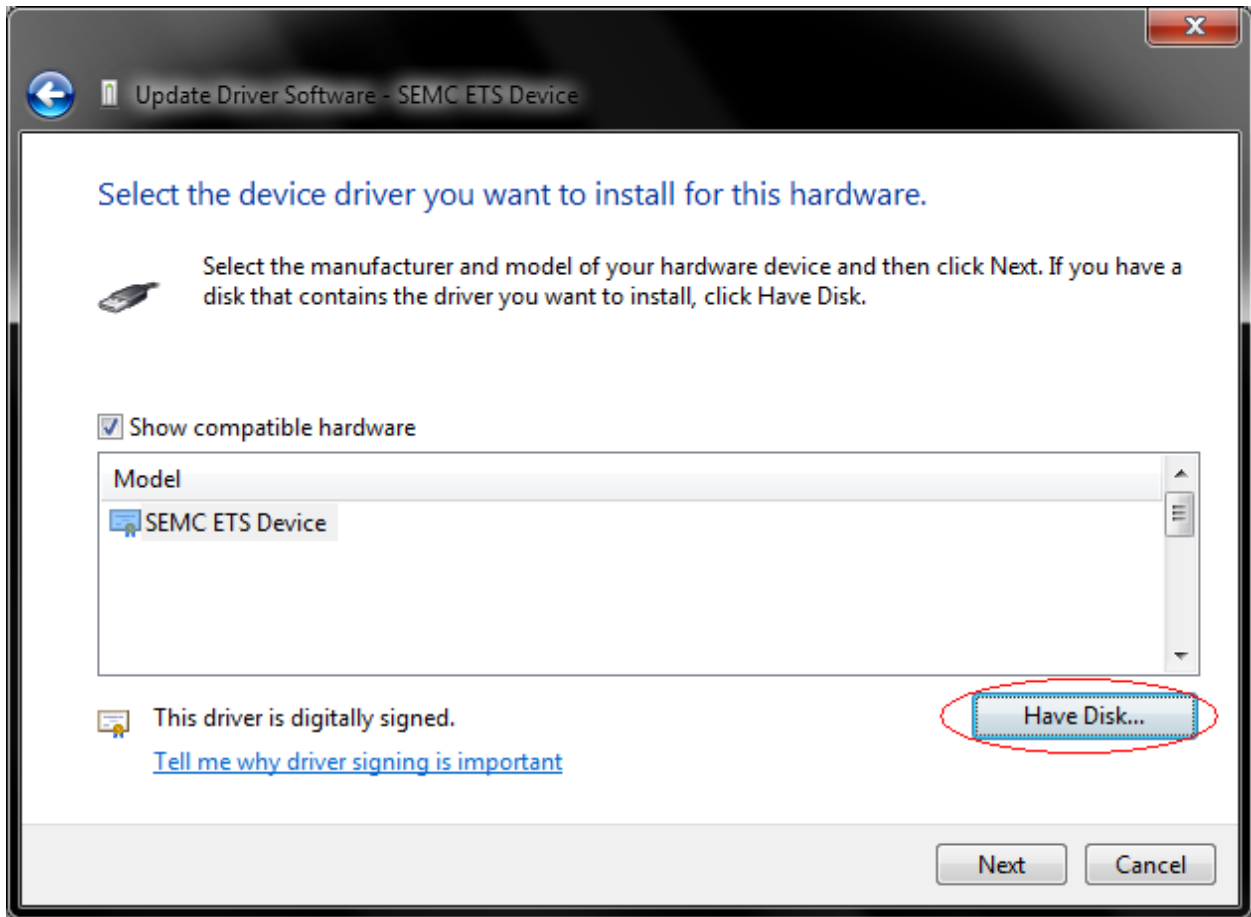
Click Browse my computer for driver software.



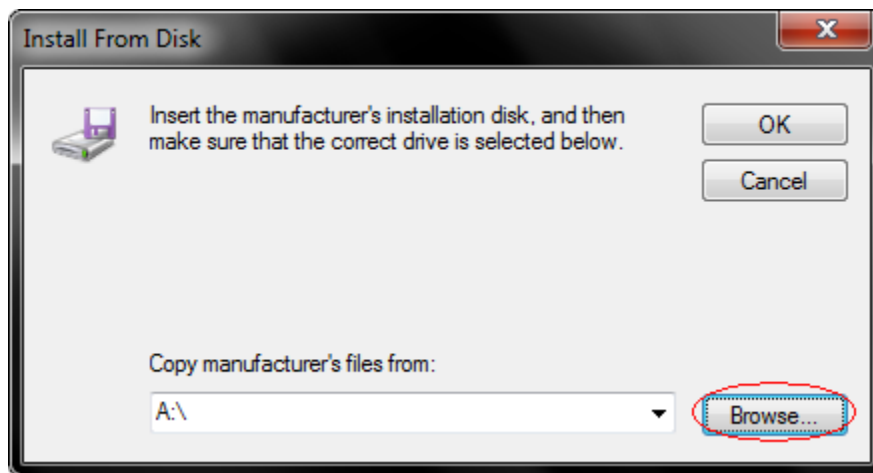
Click Let me pick from a list of device driver on my computer.



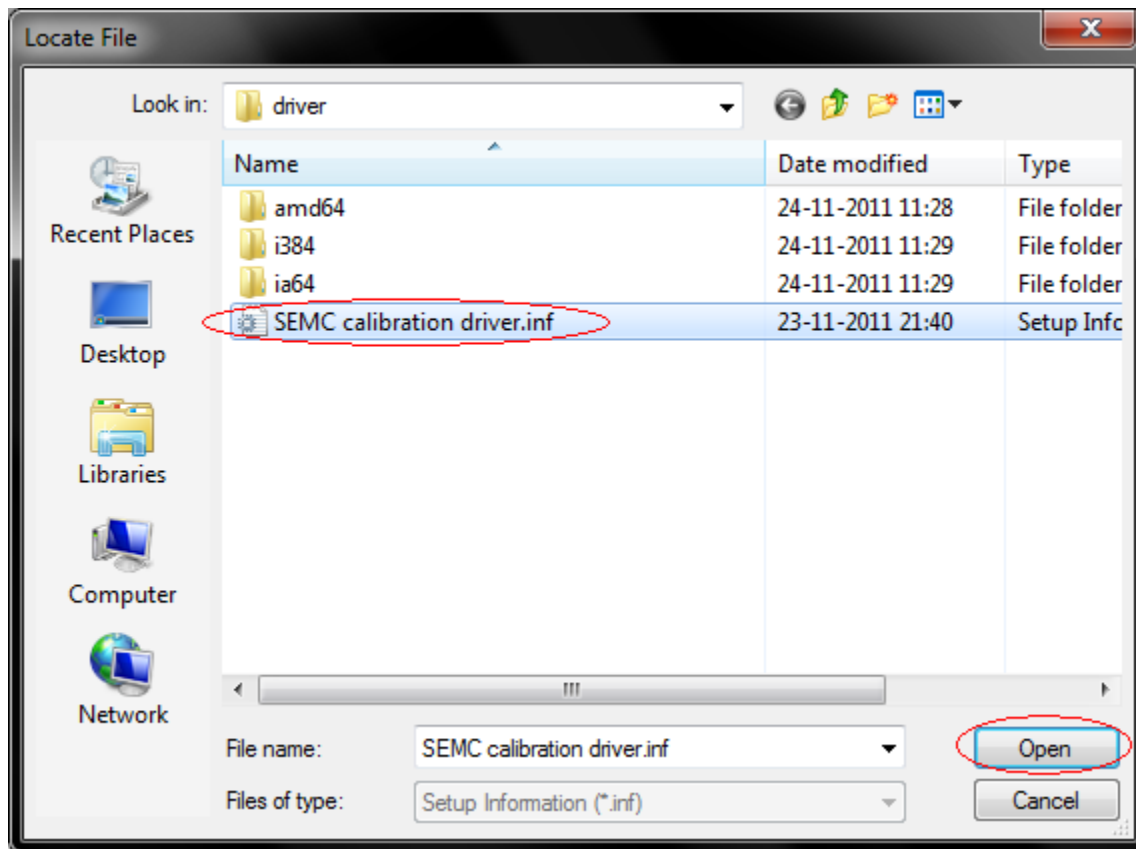
Click Have Disk.



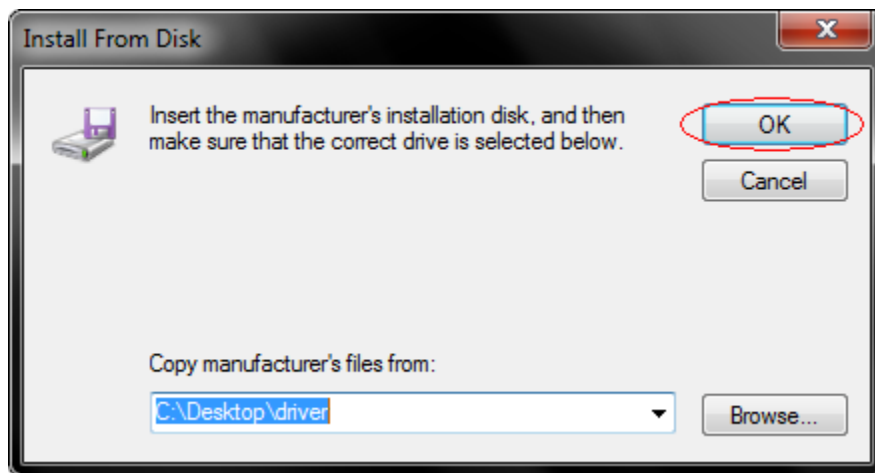
Click Browse.



Browse to the folder where you have downloaded the driver.  
Select the SEMC calibration driver.  
Click Open.

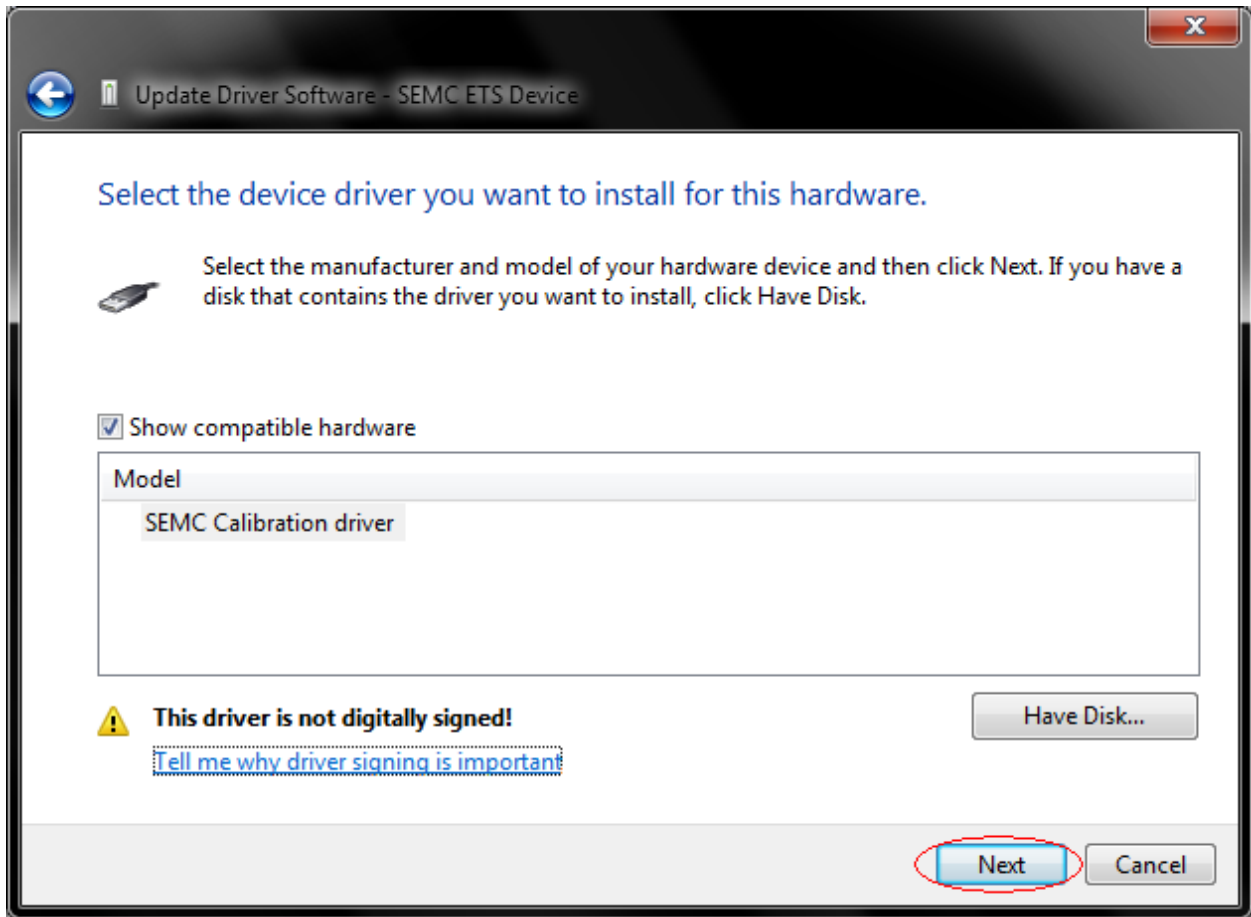


Click OK.

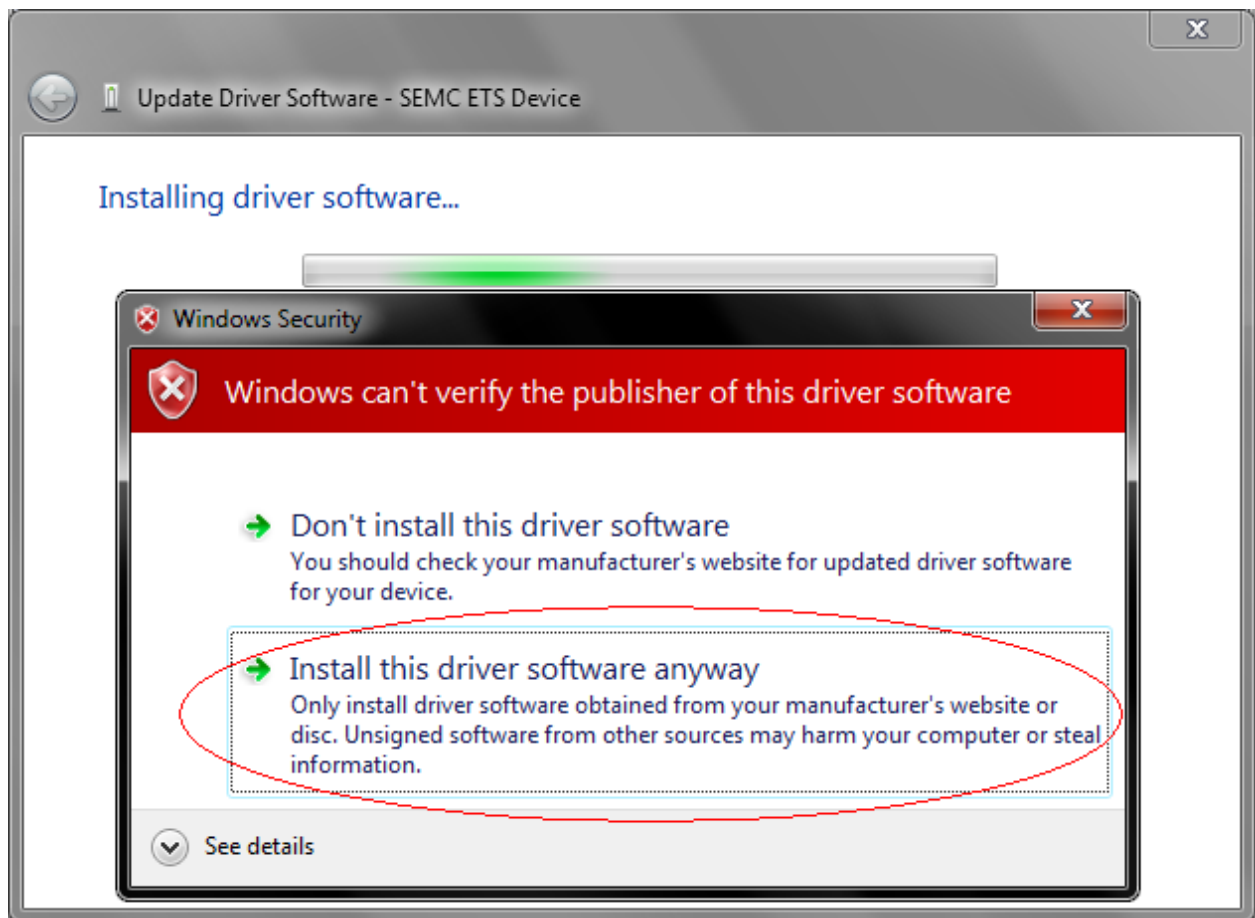




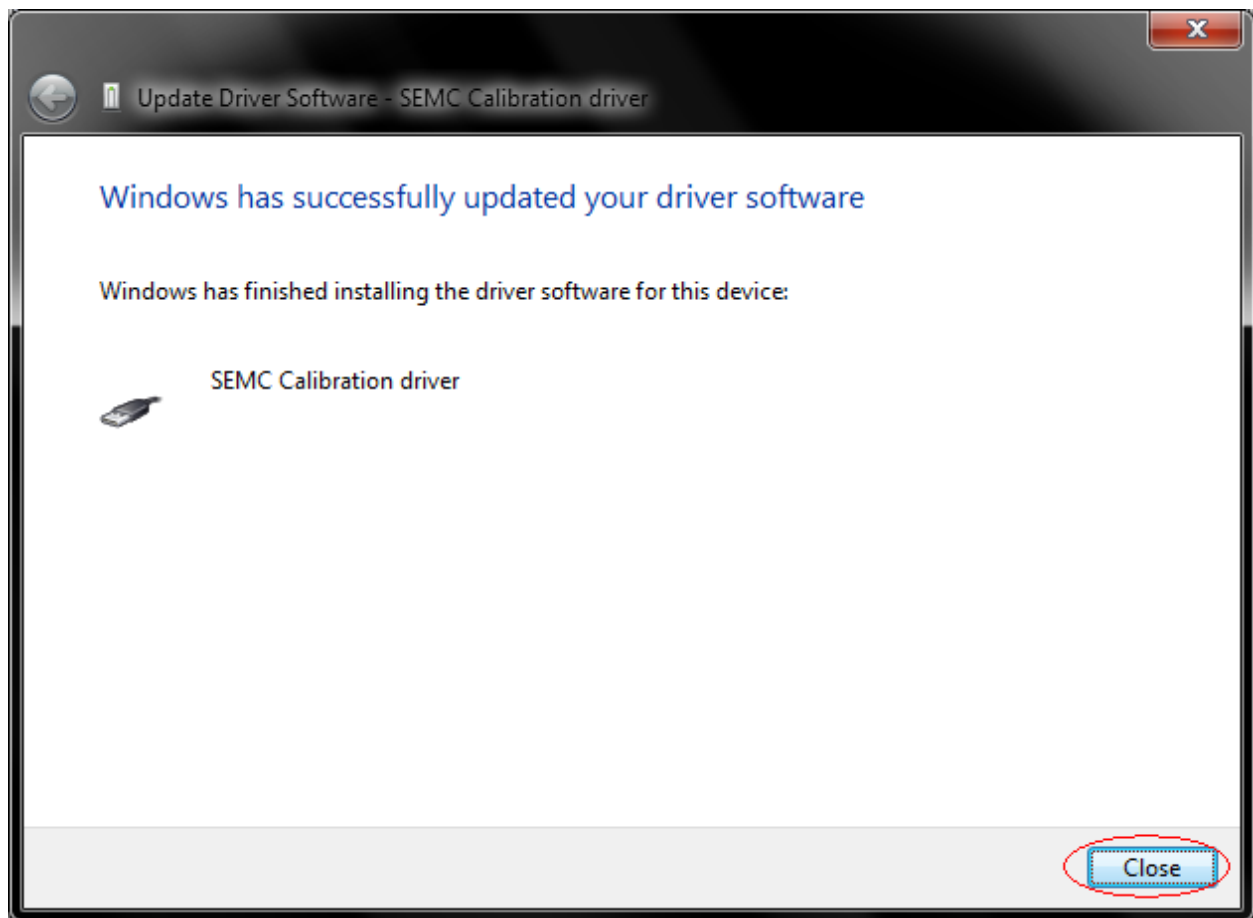
Click Next.



Depending of the security settings this widow can pop up.  
Click Install this driver software anyway.



Click Close.



Now it should say SEMC Calibration driver.

